

For ordering assembled PCB from JLC you need

- Gerber ZIP file
- BOM Bil of Material file (csv format)
- CPL ,Component Location file' (csv format)

Go to <https://jlcpcb.com/> log in (or register) and select ,QUOTE NOW'

J@LC JLCPCB HOME CAPABILITIES ABOUT US SUPPORT ▾ RESOURCES ▾

PCB SMT-Stencil

Add your gerber file

Only accept zip or rar, Max 10 M

[Instructions for ordering](#)

[Upload History >>](#)

Layers ③ 1 2 4 6

Dimensions ③ 100 * 100 mm ▾

PCB Qty ③ 5 ▾

Different Design ③ 1 2 3 4

Delivery Format ③ Single PCB Panel by Customer Panel by JLCPCB

Click ,Add your Gerber File' and select the Gerber ZIP file provided.

On successfull load JLC will show you the board design and the correct dimensions

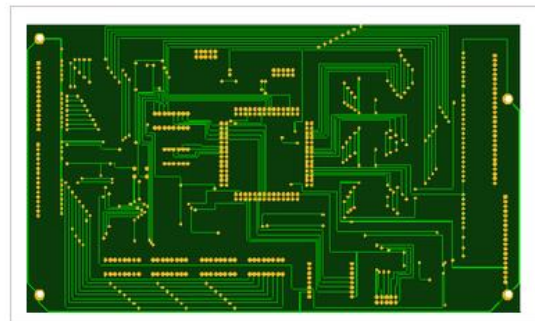
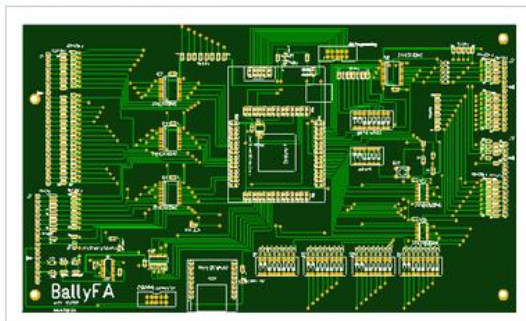
Note:

Check if you have valid dimensions as in the example below (6.1x10.43 inches in this case). Sometimes the JLC loader does not recognize PCB border outline and cannot calculate the dimensions.

In this case just repeat the upload, in most cases the error will go away.

Detected 2 layer board of 155x265mm(6.1x10.43 inches) .

Your upload has finished processing. Enter the project details below and we'll move on to checking all the individual layers to make sure that they're correct.



[Gerber Viewer](#)

✓ Success, this file has been saved to your [File Manager](#)

[<< Back to Upload File](#)

Layers

Dimensions *

PCB Qty

You may want to change the quantity here.

Layers ?

Dimensions ? *

PCB Qty ?

Different Design ?

Delivery Format ?

PCB Thickness ?

PCB Color ?

Surface Finish ?

Copper Weight ?

Gold Fingers ?

Material Type ?

Confirm Production file ?

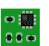

Flying Probe Test ?


Castellated Holes ?

Remove Order Number ?

Go with the defaults for the other values.

Remark

 **SMT Assembly**  Free SMT Assembly for your PCB order

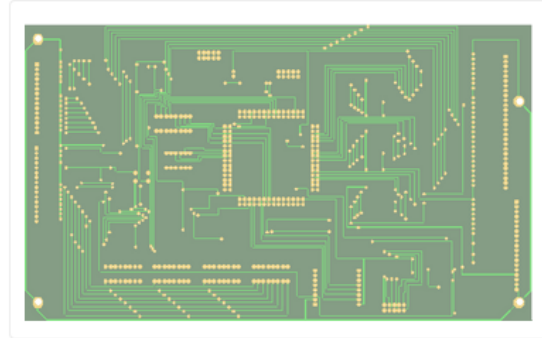
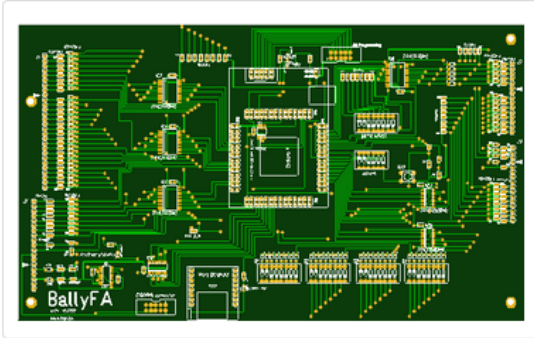
 **Stencil** Order together with PCB

[What cases will be charged of extra cost ?](#)

Now scroll down and select 'SMT Assembly'



- Only accept single sided placement, we recommend you choose the side which has more SMD parts.
- The parts that are not in [JLCPCB SMT Parts Library](#) won't be placed on your board.
- The order panelized by v-cut can not be made with SMT assembly.



Assemble top side

Assemble bottom side

SMT QTY

Tooling holes

Available PCB Specs for SMT Assembly:

- Layer: 2&4 Layer
- Qty: ≤30pcs
- Thickness: 1.0mm/1.2mm/1.6mm
- Color: Green
- Copper weight: 1oz

Select ,Assemble top side' and then ,Confirm'

BallyFA_1_01_BOM.xlsx

Only accept XLS,XLSX,CSV.

[View Sample BOM](#)

BallyFA_1_01_CPL.xlsx

Pick&Place File,Only accept XLS,XLSX,CSV.

[View Sample CPL](#)

Not sure where to start? Check our [SMT FAQs page](#).

Tips: With EasyEDA, you can generate BOM/CPL files with a single click.

[< Go back](#)

Add provided BOM & CPL file and click ,NEXT'

Top Side Select the parts you want to assemble on your boards. Cannot use more than 10 kinds of Extended parts for each order.

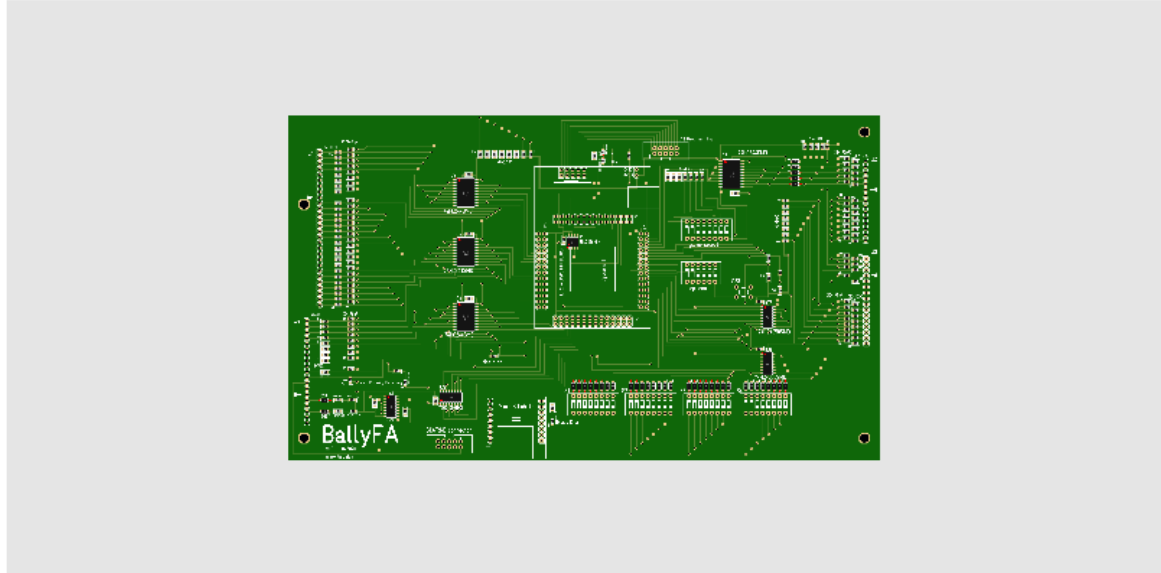
total 25 parts detected, of which 25 parts to be confirmed, 0 parts not selected.

Uploaded BOM Data			Review Matched Parts				
Designator	Comment	Footprint	Matched Part Detail		Qty	Unit Price	Operate ?
IC1	HEF4049BT	SOIC-16	HEF4049BT SOIC-16_3.9x9.9x1.27P	Extended Part C6735	1	€0.1159	confirmed
IC5	25LC256-I/SN	SOIC-8	25LC256-I/SN SOIC-8_3.9x4.9x1.27P	Extended Part C84670	1	€0.6009	confirmed
IC7,IC8,IC9	CD74HC4050M96	SOIC-16	CD74HC4050M96 SOIC-16_3.9x9.9x1.27P	Extended Part C131932	3	€0.2231	confirmed

Sometimes JLC changes the ,In stock parts' so make sure **all selected parts are confirmed**. If not please let me know and I will try to correct the error!

After checking OK, click NEXT.

Review Parts Placement



● The parts placement is for reference purpose only. If you are sure the rotation and polarity of your design are correct, you can omit the preview and continue placing your order.

Now JLC shows you a preview, the locations of the parts should be correct. But you can scroll in and out to double check.

Unselected Parts(1 item) ?

Download Unselected Parts List

Designator	Comment	Footprint	Qty
DESIGNATOR	COMMENT	FOOTPRINT	0

Weight: 1.48kg

SAVE TO CART

By placing your order, pls read the [Terms and Conditions of JLCPCB SMT Service](#).

Again check for not selected parts, the line above is OK (comment line from the BOM file), now click **SAVE TO CART**

During the checkout process you will be asked about the shipping method.

DDP (Customs clearance, duty and customs fees handled by JLCPCB.)

EuroPacket 6-8 bussiness days

Custom duty and tax will be pre-paid, company users will be free of TAX if company VAT number are entered in shipping address.

Pre-pay customs duties & taxes(DDP)

DHL Express Priority (DDP) 2-4 business days

There will be DDP service fee included in Customs Duties & Taxes. DDP service will help to expedite custom clearance and pre-pay the custom & tax fee. Company users are not advised to use DDP service for the invoice of Duties & Taxes cannot be provided for deduction.

Pre-pay customs duties & taxes(DDP)

· Have different orders combined in a single shipment, to click "+ Add new item" button on Order History page after submitting the order.

[Back to Cart](#) [Continue](#)

For Germany I recommend to select ,Europacket' with ,Pre-pay customs duties & taxes(DDP)