

- Lamp, Solenoid & Power GND must be connected

- solder pads mosfets kleiner

- programming port 180 grad gedreht

- Beschriftung 1J4/1J5 falsch

- CN21 ports

11 U41 CB1

12 U42_CB1 -> SB_SST0 (war Reserve)

15 U41_CA1

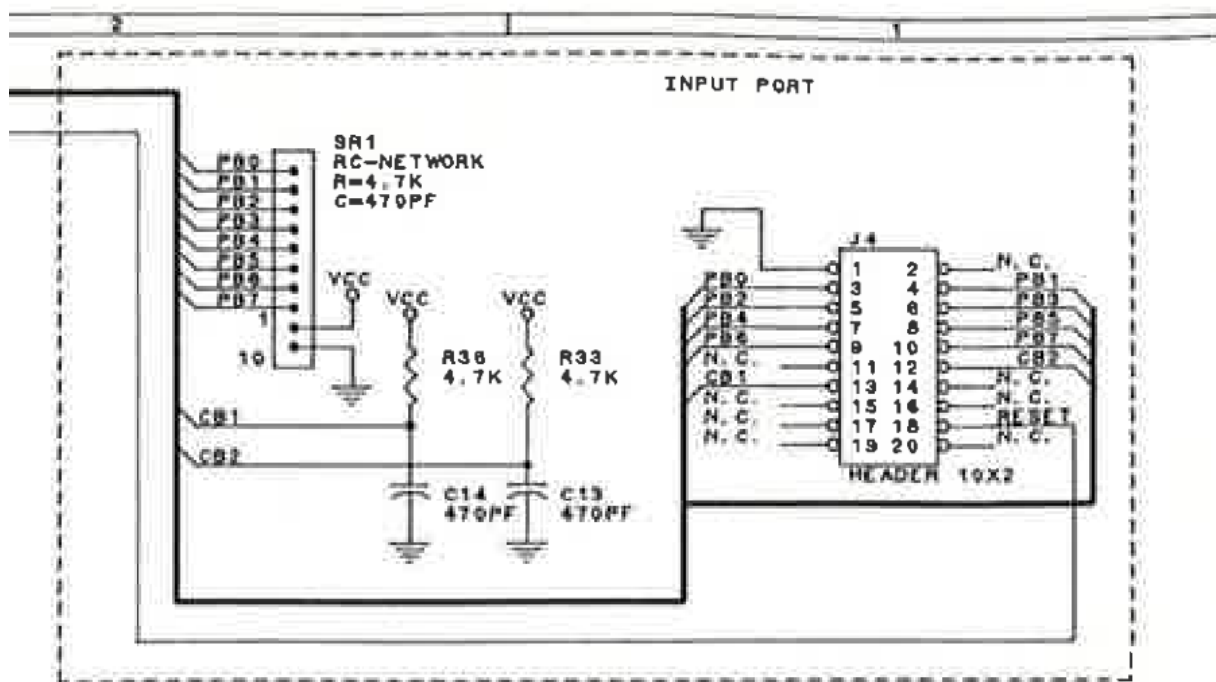
16 U42_CA1

are INPUTs!!

SYS11C do have connected only pin12 (-> CB2 on SB)

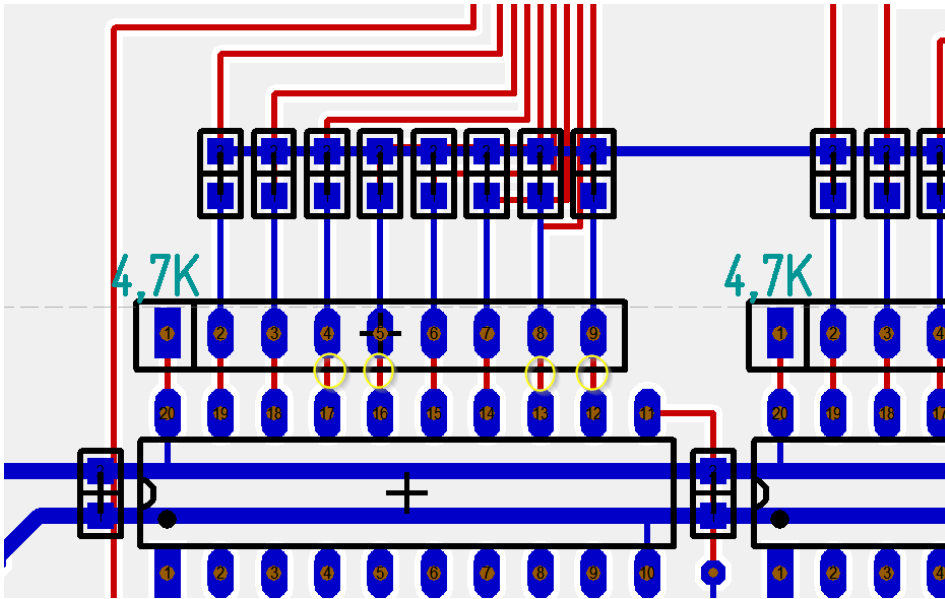
Data East do have connected pin12 (SST0) and pin16(BUSY),

according to pinname BUSY port is not used

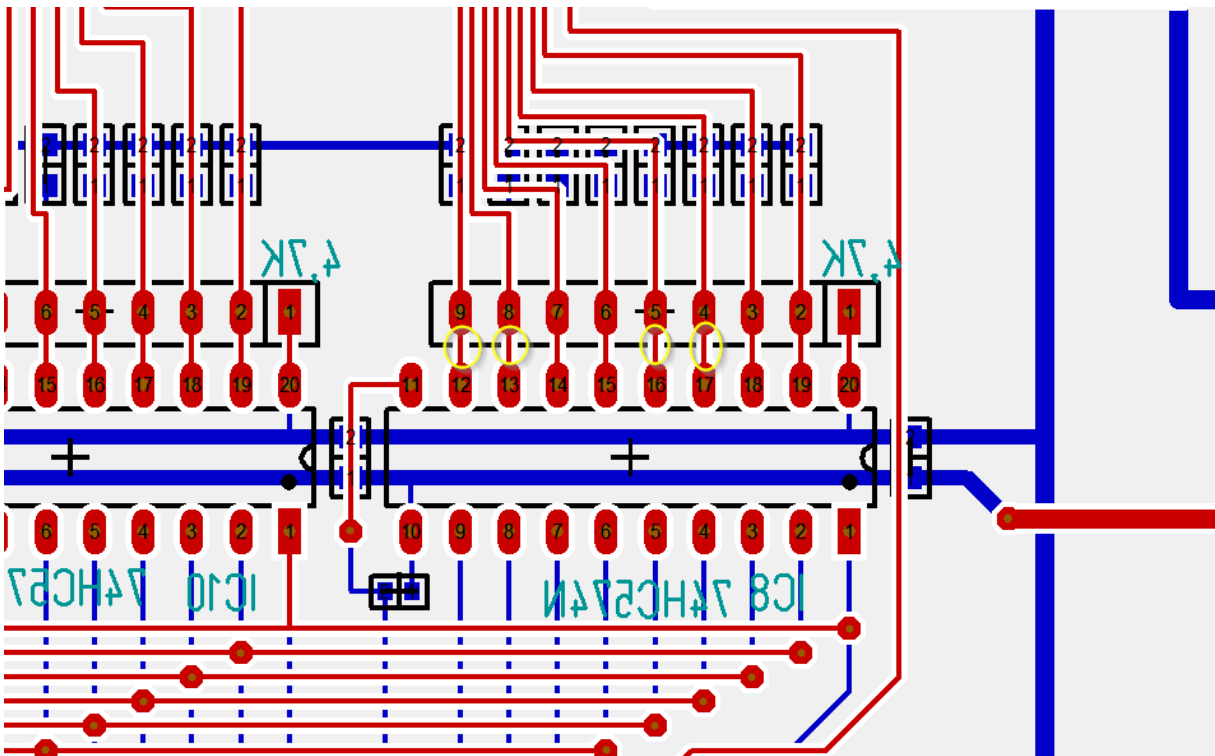


Needed mods:

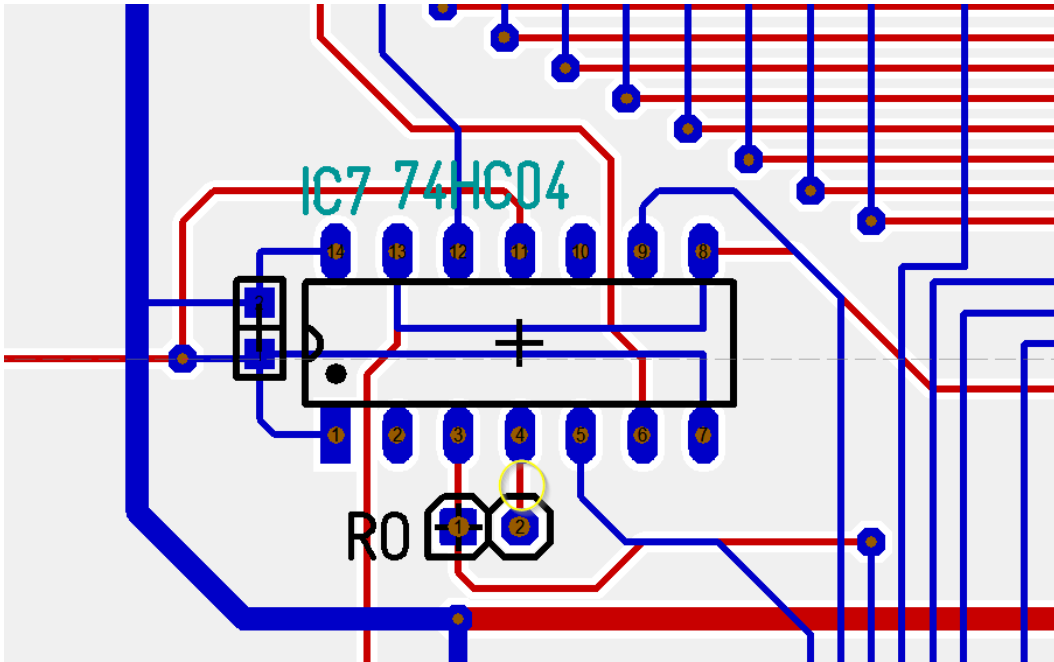
- Control solder points of lamp MOSFETs
- Add a gap to the programming connector
- 5 traces to cut
- 3 wires to add
- 1 IC pin to ,lift'



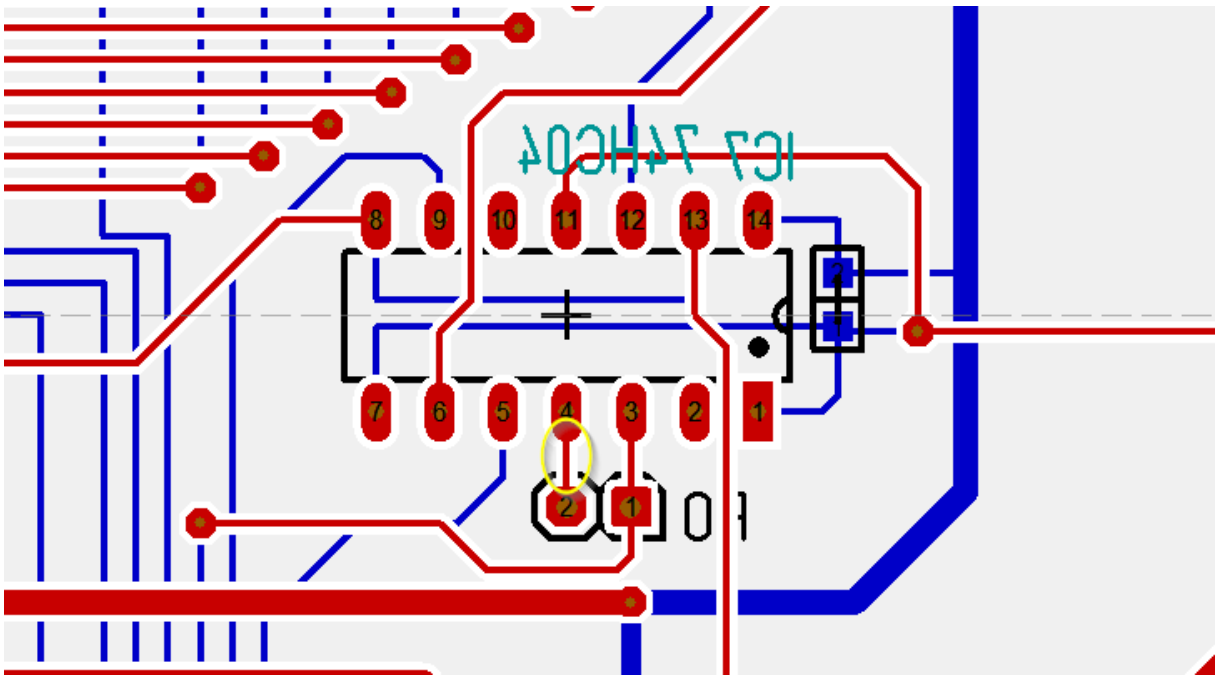
Cut 4 traces (top view)



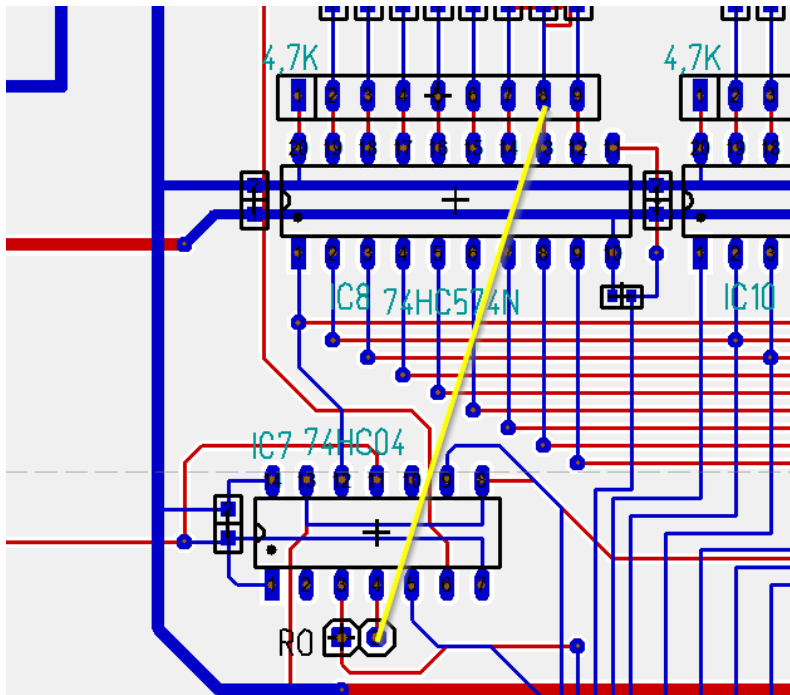
Cut 4 traces (back view)



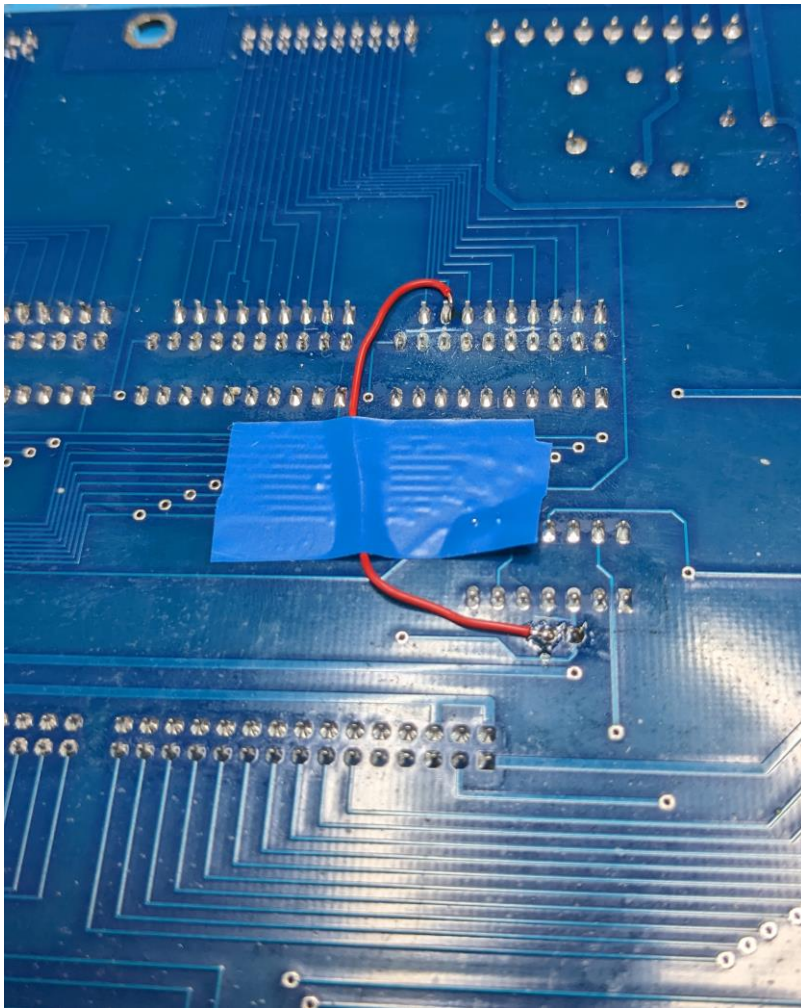
Cut 1 trace (top view)

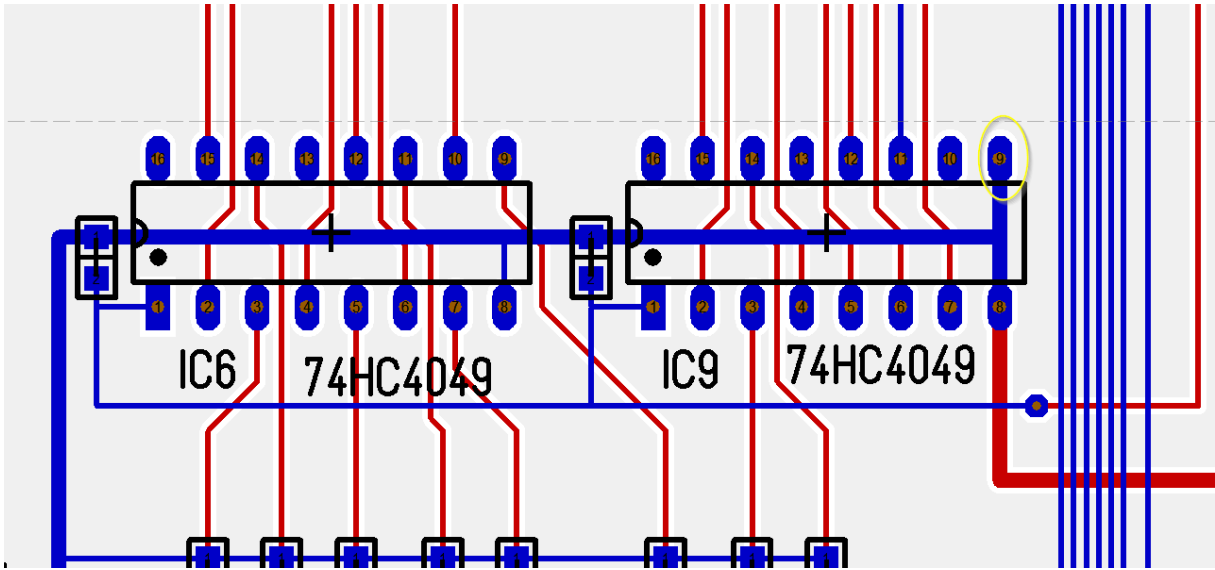


Cut 1 trace (back view)

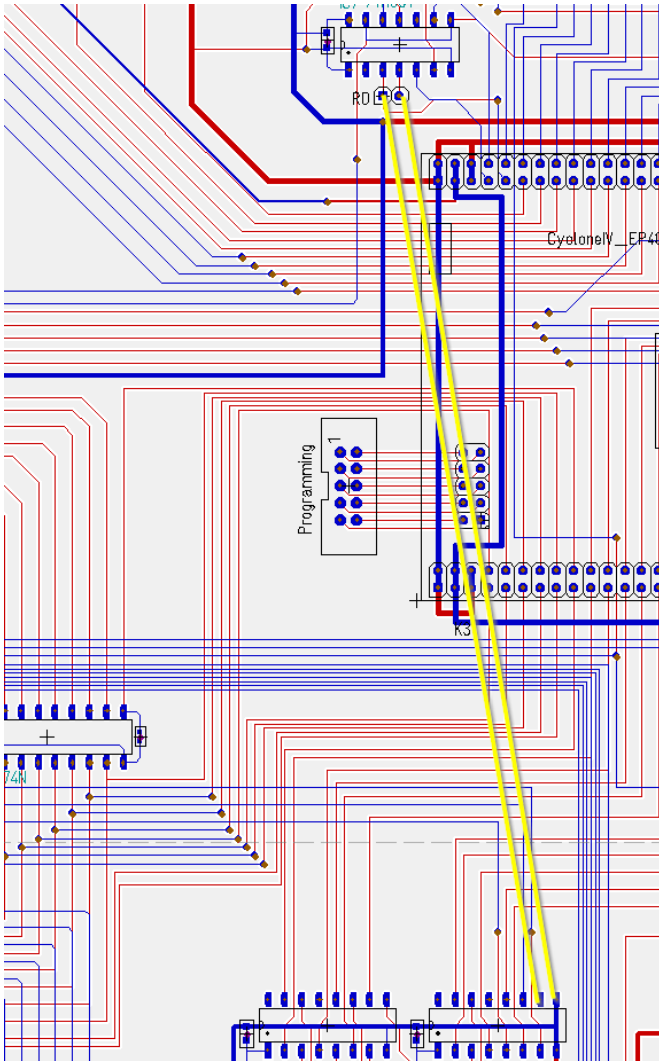


Add one wire





Lift pin9 from GND



Add 2 wires

