


Example of ordering preassembled ,WillFA7' PCBs

For ordering assembled PCB from JLC you need

- Gerber ZIP file
- CPL ,Component Location file'
- BOM Bil of Material file

Go to <https://jlcpcb.com/> sign in (or register) and select ,Instant Quote'

Choose ,Add Gerber File' (WillFA7_v1.2_03_Final.zip in this case)



← Back to Upload File Detected 2 layer board of 167x330.83mm(6.57x13.02 inches) . [Gerber Viewer](#)

Base Material ?

Layers ?

Dimensions ? *

PCB Qty ?

Product Type ?

PCB dimensions will be detected automatically. Not much to adjust here except the Quantity. You have to purchase at least 5 PCBs, in this xample we will choose 15 in order to be able to show how to proceed in case some components are ,out of stock' (inventory shortage)

PCB Specifications

You can go with the defaults, however for preassembled PCBs I would choose ,Lead Free HASL' as Surface Finish as the components are also lead free. Also ,Black' as the PCB Color may look nice.

PCB Specifications ^

Different Design ?

Delivery Format ?

PCB Thickness ?

PCB Color ?

Silkscreen ?

Surface Finish ?

Go with the defaults for High-Spec Options and choose PCB Assembly

High-spec Options ^

Outer Copper Weight ?

Via Covering ?

Board Outline Tolerance ?

Confirm Production file ?

Remove Order Number ?

Flying Probe Test ?

Gold Fingers ?

Castellated Holes ?

Advanced Options v

PCB Remark ✎



PCB Assembly



Free Assembly for your PCB order

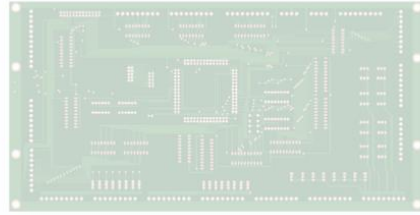
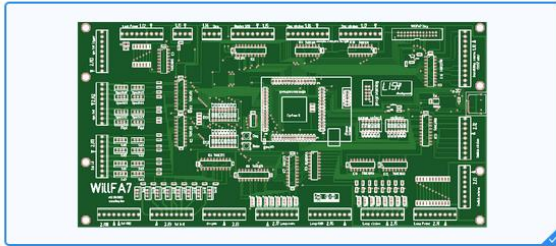


Go with the defaults for PCB Assembly and choose ,confirm‘



PCB Assembly

COUPON Free Assembly for your PCB order



Assemble top side

Assemble bottom side

PCBA Type



Economic

Standard

[What's the difference?](#)

Assembly Side



Top Side

Bottom Side

Both Sides

PCBA Qty



15

Tooling holes



Added by JLCPCB

Added by Customer

Confirm Parts Placement



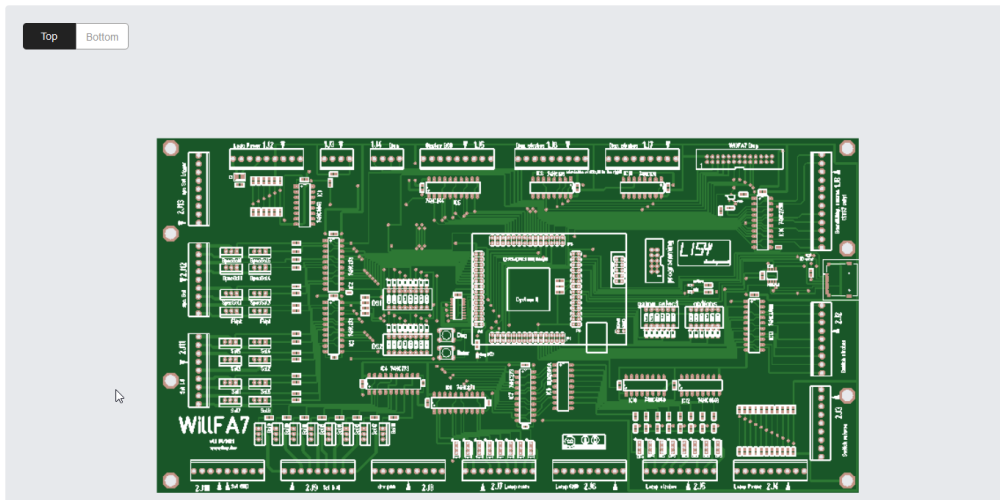
No

Yes

I agree to the [Terms and Conditions of JLCPCB assembly Service.](#)

Confirm

Choose next



[← Change PCB specifications](#)

PCBA Type: Economic

Assembly Side: Top Side

PCBA Qty: 15

NEXT

On the next page choose BOM & CPL and click ,Process BOM & CPL'

WillFA7_v1_2_03_BOM.xlsx

Only accept XLS,XLSX,CSV. [View Sample BOM](#)

WillFA7_v1_2_03_CPL.xlsx

Pick&Place File. Only accept XLS,XLSX,CSV. [View Sample CPL](#)

Not sure where to start? Check our [SMT FAQs page](#).

Process BOM & CPL

The next page is very important and need to be checked closely!

Top Side Total 35 parts detected | 32 Parts confirmed | 1 parts Inventory shortage | 2 parts not selected

Uploaded BOM Data			Review Matched Parts					
Top Designator	Comment	Footprint	Matched Part Detail		Qty	Source	Lib Type	Total Cost
P13,P14	CH3.96-4A	CONN-TH_CH...	CH3.96-4A	C10379	30	JLCPCB	Extended	€0.9145
P18	CH3.96-12A	CONN-TH_CH...	CH3.96-12A	C10589	15	JLCPCB	Extended	€1.5214
FLIP1,FLIP2,SOL...	IRL540NPBF	TO-220	IRL540NPBF	C111607	360	JLCPCB	Extended	€214.4730
IC16	74HC4050	SOIC-16	CD74HC4050M96	C131932	15	JLCPCB	Extended	€3.6116
IC13,IC14,IC15	DIR90S20P	DIR-20	Z-ICS0S20P-NG00	C132507	120	JLCPCB	Extended	€5.4072

In an ideal case the number of parts detected should be equal tot he number of parts confirmed. In this example we have 1 part with inventory shortage and 2 parts which could not be selected.

Parts not selected

This happens sometimes (I'm in contact with JLC support about that) and need to be cleared manually. Scroll down tot he not selected parts and choose ,Search'

K4	X9555WV-2x...	Plugin,P=2.54mm	No part selected	Search	Pre-order			
K5,K6,K7,K8	PM254-2-14-...	Plugin,P=2.54mm	No part selected	Search	Pre-order			

For K4 choose the first possibility

K4 X9555WV-2x... Plugin,P=2.54mm No part selected Search Pre-order

Part Info Search Part Attribute Price index

X9555WV-2x13-6TV01 search Basic Parts Only In Stock

Part	Package	Lib Type	Unit Price	Stock	My Part	Source
X9555WV-2x13-6TV01 Plugin,P=2.54mm IDC Connectors R...	Plugin,P=2.54mm	Extended	0.2597	138	0	JLCPCB
X9555WVS-2x13-6TV01 - Wire To Board / Wire To Wire Conn...	CONN-SMD	Extended	0.978	0	0	JLCPCB

2 items in total

For K4,K5,K6,K7 choose the first possibility

K5,K6,K7,K8 PM254-2-14-... Plugin,P=2.54mm No part selected Search Pre-order

Part Info Search Part Attribute Price index

PM254-2-14-Z-8.5 search Basic Parts Only In Stock

Part	Package	Lib Type	Unit Price	Stock	My Part	Source
PM254-2-14-Z-8.5 2.54mm 2.54mm 双排 3A -40°C~+10...	Plugin,P=2.54mm	Extended	0.3777	882	0	JLCPCB
PM254-2-07-Z-8.5 2.54mm 2.54mm 双排 3A -40°C~+10...	Plugin,P=2.54mm	Extended	0.2032	652	0	JLCPCB

2 items in total

Inventory shortage

P12,P15,P16,P17...	CH3.96-9A	CONN-TH_CH...	CH3.96-9A	C10586	240	JLCPCB	Extended	€13.2596	75 shortfall
--------------------	-----------	---------------	-----------	--------	-----	--------	----------	----------	--------------

In this case you can either:

- 1- Continue and purchase & solder the parts yourself
- 2- Try to find a similar part
- 3- Do a ,pre order' and add this part to your personal part library

